

# *NZR DAY 2019*

WITH

MARLBOROUGH ASSOCIATED MODELLERS SOCIETY



## FROM THE CONVENOR

---

Hello all,

First off I must thank everyone who came along to the NZR Day, and a big thank you to M.A.M.S. for having us, having a great set up, and for feeding us so well.

The day started off overcast, which turned to a constant drizzle. Things weren't looking great but as people drifted in and unloaded quite a range of different locomotives it started looking good. After lunch everybody livened up, the drizzle cleared, and the trains started to roll!

It was great to have locomotives attend I haven't seen before and others that haven't seen the sun in a few years. It was also good to have a quite a few smaller gauge locomotives. One feature we had this time around that we didn't have last time was the rolling stock. Having some appropriate looking wagons - or better yet, scale wagons - really changes the feel of things, and I think it was fantastic to see.

We had an impromptu vote and give away, sponsored by Freeman Roofing, for the favourite steam model and favourite diesel or electric model.

Favourite steam model went to Reece Cobb's 2.5" gauge Ab 831.

Favourite diesel or electric model went to Graeme Chisnall's E 1.

Once again thank you to all those who attended and for making the day what it was.

Richard Satherley



*Cover: 2.5" Ab 831, 3.5" Ab 715 and 5" Ab 663.*



*MU cables and controllers being set up on Tony Winter's double heading Dxc's with other diesels being prepared to run on the track behind.*



*Numerous locomotives of different scales on display and being prepared in the steaming bays.*



*Fa 315 and the 50+ year old F Henrietta. Both 5" models.*



*Ian Welch's 5" model of Ab 663, possibly its first outing in 20 years.*



*Dxc 5189 + Dxc 5206 with coal wagon riding trolleys.*



*The new and the old: One of Tony Winter's riding trolleys (left) made up as a modern CE coal wagon and Robin Lawes' Q class West Coast coal wagon.*



*While some people grumble about the cold, it certainly makes steam more visible. Fa 315 seen here with a great looking plume trailing behind her.*



*Two great 3.5" gauge diesel models, petrol powered Dg 785 (top) and battery powered Dc 4352.*



*Wab 795 and Ab 663.*





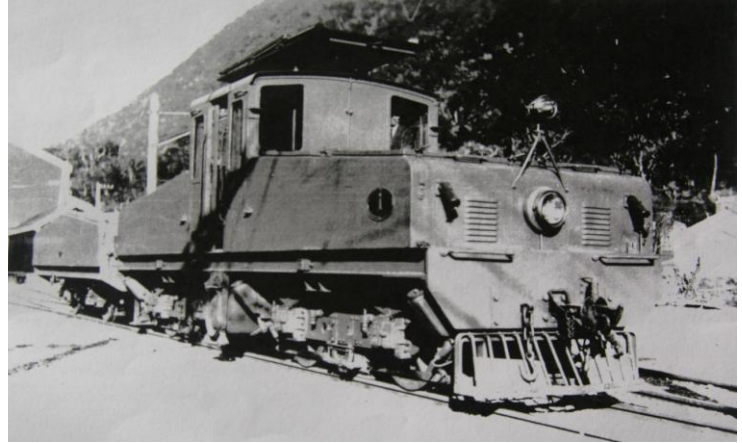
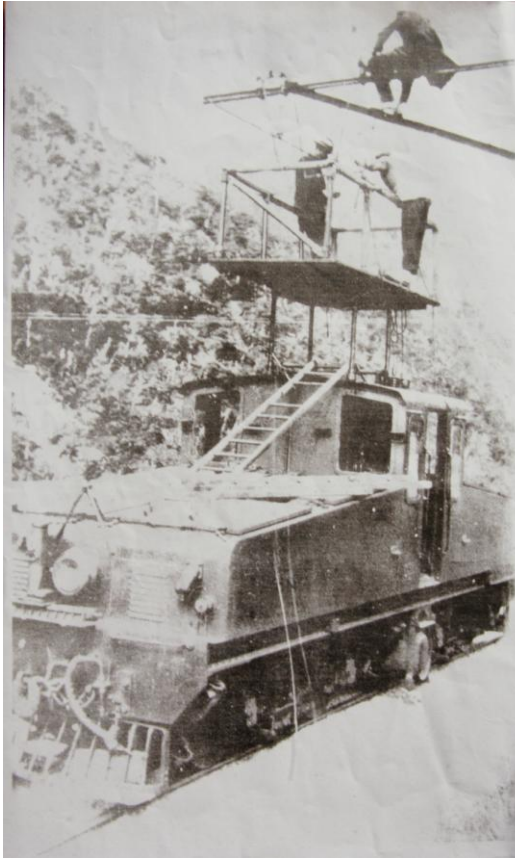
*Dave Campbell racing around the raised track with Ab 715.*

*Robin Lawes at the throttle of Eo 3 with a short train of NZR wagons.*



*Eo 3, E 1, Dsc 2011, Dxc 5189 and Dxc 5206 lined up in the ground level yard.*





*The third and final type of locomotive given the E classification by the NZR was this single -in-class example supplied by English Electric. The small, 1922 built battery-electric locomotive was used for maintenance of the over head traction lines through the Otira tunnel. The locomotive featured a collapsible work platform on the cab roof, 4-wheel tender holding half of the locomotives batteries, a top speed of 10 mph and power output of 176 hp.*

*E1 was scrapped in 1930.*







*7.25" Guards van F 508 on the tail end of a short freight consist with Q 431 and H 194.*

*Ec 7 looking a bit small beside an Ab, both are 5" gauge models.*



## Attendee Models

Locomotives	
2.5"	Ab 831 Ab (under construction)
3.5"	Da 1415 Ab 715 Dg 785 Dc 4352
5"	Fa 315 Wab 795 Ab 663 F Henrietta Ec 7 T 103
7.25"	Eo 3 Dxc 5189 Dxc 5206 Dsc 2011 E 1 Dsb

Rolling Stock	
5"	Steel La (under construction)
7.25"	H 194 Q 431 F 508 Guards Van Ce 3707 Coal hopper ride car Ce 3707 Coal hopper ride car



*T class of 1880, no. 103 built by Win Holdaway.*

